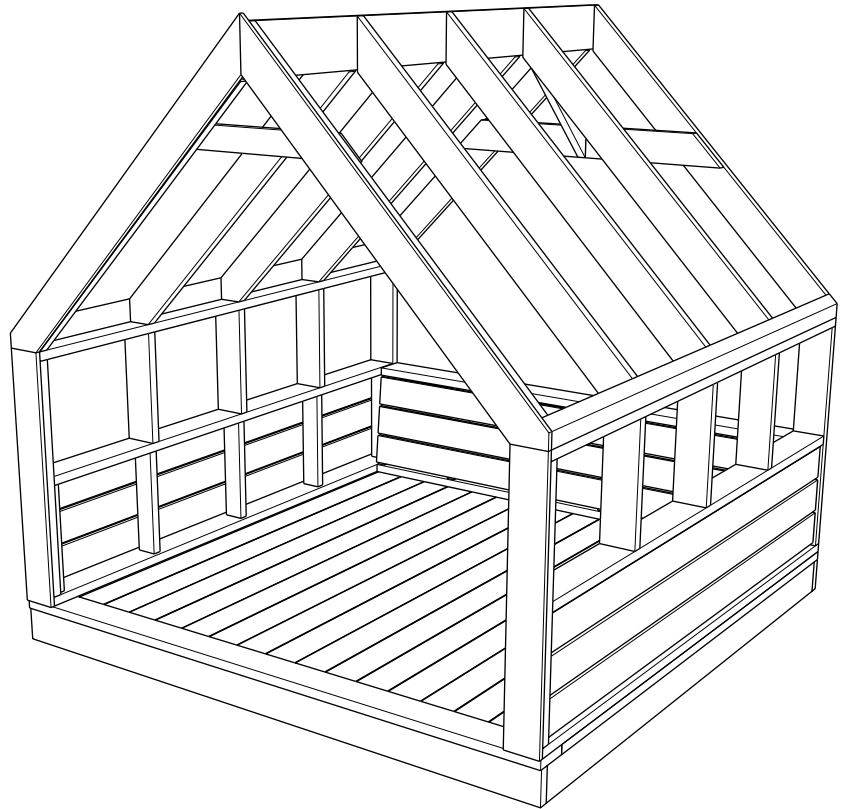


REAL CEDAR DAY BED

DESIGN: REAL CEDAR ORIGINAL



Whether it's at the cottage, in your backyard or by the pool, this multipurpose daybed is a great way to enhance your outdoor living space. You can use it as a reading nook, yoga studio, a playhouse for the kids and a spare bedroom for those guests who prefer sleeping underneath the stars. This particular project is a pleasure to build because the design calls for beautiful, Western Red Cedar, which is easy to work with. It lays straight, takes fasteners easily and the tools love it. Plus, Real Cedar is naturally resistant to rot decay and insects, making it ideal for all your outdoor projects. And let's face it, nothing looks, feels... or smells quite like Western Red Cedar.

In terms of WRC grades, choose knotty (Architect Knotty, Select Knotty) for a more rustic look and clear (Architect Clear, 'A' & better) for a polished contemporary look. And when it comes to specifying sizes, we recommend asking your local Real Cedar retailer if they have any short lengths in stock. Using short lengths means less cutting, less waste and more savings for you. Search for kiln dried material, if available.

WHAT YOU'LL NEED (PT. 1)

FLOOR

| Part # | Description | Finished size | | | Nominal Sizes | Material | Qty. |
|--------|-------------|---------------|--------|---------|---------------|------------|------|
| | | T | W | L | | | |
| A1 | floor frame | 1 1/2" | 5 1/2" | 96" | 2 x 6 x 8 | WRC Knotty | 2 |
| A2 | floor frame | 1 1/2" | 5 1/2" | 93" | 2 x 6 x 8 | WRC Knotty | 2 |
| A3 | floor frame | 1 1/2" | 5 1/2" | 93" | 2 x 6 x 8 | WRC Knotty | 7 |
| B1 | floor deck | 1 1/2" | 5 1/2" | 93" | 2 x 6 x 8 | WRC Knotty | 1 |
| B2 | floor deck | 1 1/2" | 5 1/2" | 90 3/4" | 2 x 6 x 8 | WRC Knotty | 17 |

WHAT YOU'LL NEED (PT. 2)

WALLS

| Part # | Description | Finished size | | | Nominal Sizes | Material | Qty. |
|--------|-----------------------------|---------------|--------|---------|---------------|------------|------|
| | | T | W | L | | | |
| C1 | right wall horizontal | 1 1/2" | 5 1/2" | 95 7/8" | 2 x 6 x 8 | WRC Knotty | 2 |
| C2 | right wall vertical | 1 1/2" | 5 1/2" | 39" | 2 x 6 x 4 | WRC Knotty | 2 |
| C3 | right wall middle | 1 1/2" | 5 1/2" | 92 7/8" | 2 x 6 x 8 | WRC Knotty | 1 |
| C4 | right wall vertical sm | 1 1/2" | 3 1/2" | 18 1/2" | 2 x 4 x 2 | WRC Knotty | 5 |
| C5 | right wall slats | 3/4" | 5 1/2" | 92 7/8" | 1 x 6 x 8 | WRC Knotty | 3 |
| C6 | right wall vertical lg | 1 1/2" | 5 1/2" | 19" | 2 x 6 x 8 | WRC Knotty | 3 |
| D1 | left wall horizontal | 1 1/2" | 5 1/2" | 95 7/8" | 2 x 6 x 8 | WRC Knotty | 2 |
| D2 | left wall vertical | 1 1/2" | 5 1/2" | 39" | 2 x 6 x 4 | WRC Knotty | 2 |
| D3 | left wall middle | 1 1/2" | 5 1/2" | 92/8" | 2 x 6 x 8 | WRC Knotty | 1 |
| D4 | left wall vertical sm | 1 1/2" | 3 1/2" | 18 1/2" | 2 x 4 x 2 | WRC Knotty | 5 |
| D5 | left wall slats | 3/4" | 5 1/2" | 92 7/8" | 1 x 6 x 8 | WRC Knotty | 3 |
| D6 | left wall vertical lg | 1 1/2" | 5 1/2" | 19" | 2 x 6 x 8 | WRC Knotty | 3 |
| E1 | back wall horizontal top | 1 1/2" | 5 1/2" | 85" | 2 x 6 x 8 | WRC Knotty | 1 |
| E2 | back wall horizontal bottom | 1 1/2" | 3 1/2" | 85" | 2 x 4 x 8 | WRC Knotty | 2 |
| E3 | back wall vertical | 1 1/2" | 5 1/2" | 18 3/8" | 2 x 6 x 2 | WRC Knotty | 5 |
| E4 | back wall slats | 3/4" | 5 1/2" | 85" | 1 x 6 x 8 | WRC Knotty | 3 |
| F1 | support | 1 1/2" | 5 1/2" | 95 7/8" | 2 x 6 x 8 | WRC Knotty | 2 |

ROOF

| Part # | Description | Finished size | | | Nominal Sizes | Material | Qty. |
|--------|--------------|---------------|--------|---------|---------------|------------|------|
| | | T | W | L | | | |
| G | rafters | 1 1/2" | 5 1/2" | 65 3/8" | 2 x 6 x 6 | WRC Knotty | 10 |
| H | ridge | 1 1/2" | 7 1/2" | 97 5/8" | 2 x 8 x 8 | WRC Knotty | 1 |
| I | front collar | 1 1/2" | 3 1/2" | 34" | 2 x 4 x 3 | WRC Knotty | 1 |
| J | back collar | 1 1/2" | 5 1/2" | 53 5/8" | 2 x 6 x 5 | WRC Knotty | 1 |
| K | support roof | 1 1/2" | 5 1/2" | 27 3/8" | 2 x 6 x 3 | WRC Knotty | 1 |

FRONT COVER

| Part # | Description | Finished size | | | Nominal Sizes | Material | Qty. |
|--------|-------------|---------------|--------|----------|---------------|------------|------|
| | | T | W | L | | | |
| L1 | cover upper | 3/4" | 5 1/2" | 70 1/44" | 1 x 6 x 8 | WRC Knotty | 2 |
| L2 | cover lower | 3/4" | 5 1/2" | 42" | 1 x 6 x 4 | WRC Knotty | 2 |

HARDWARE

| Description | Finished size | | |
|---------------------------|---------------|---|--------|
| | T | W | L |
| stainless steel screws #8 | | | 3" |
| galvanized nails | | | 1 5/8" |

INSTALLATION PROTIPS

1. Where gluing is required, only apply a polyurethane construction adhesive specially formulated for outdoor applications. Using a scrap of wood, spread a thin even layer of glue, like butter on toast. Avoid applying excessive amounts and keep glue at least 1/2" away from exterior edges of joint to avoid unappealing bleed out. Press pieces in place briefly, then pull them apart for a second before pressing firmly back in place (this helps activate the glue so it will set faster). Always use clamps to keep pieces in position while driving in screws because until the glue dries, pieces are at risk of slipping.
2. For all outdoor work, you should use corrosion-resistant stainless steel or hot-dipped galvanized nails. Other fasteners and hardware such as bolts, screws and hinges should also be made from similar corrosion resistant materials.
3. You can let the cedar weather naturally (eventually turning a beautiful silvery patina), or you can choose to finish the structure—in which case, apply the finish to all six sides of the components before assembly.

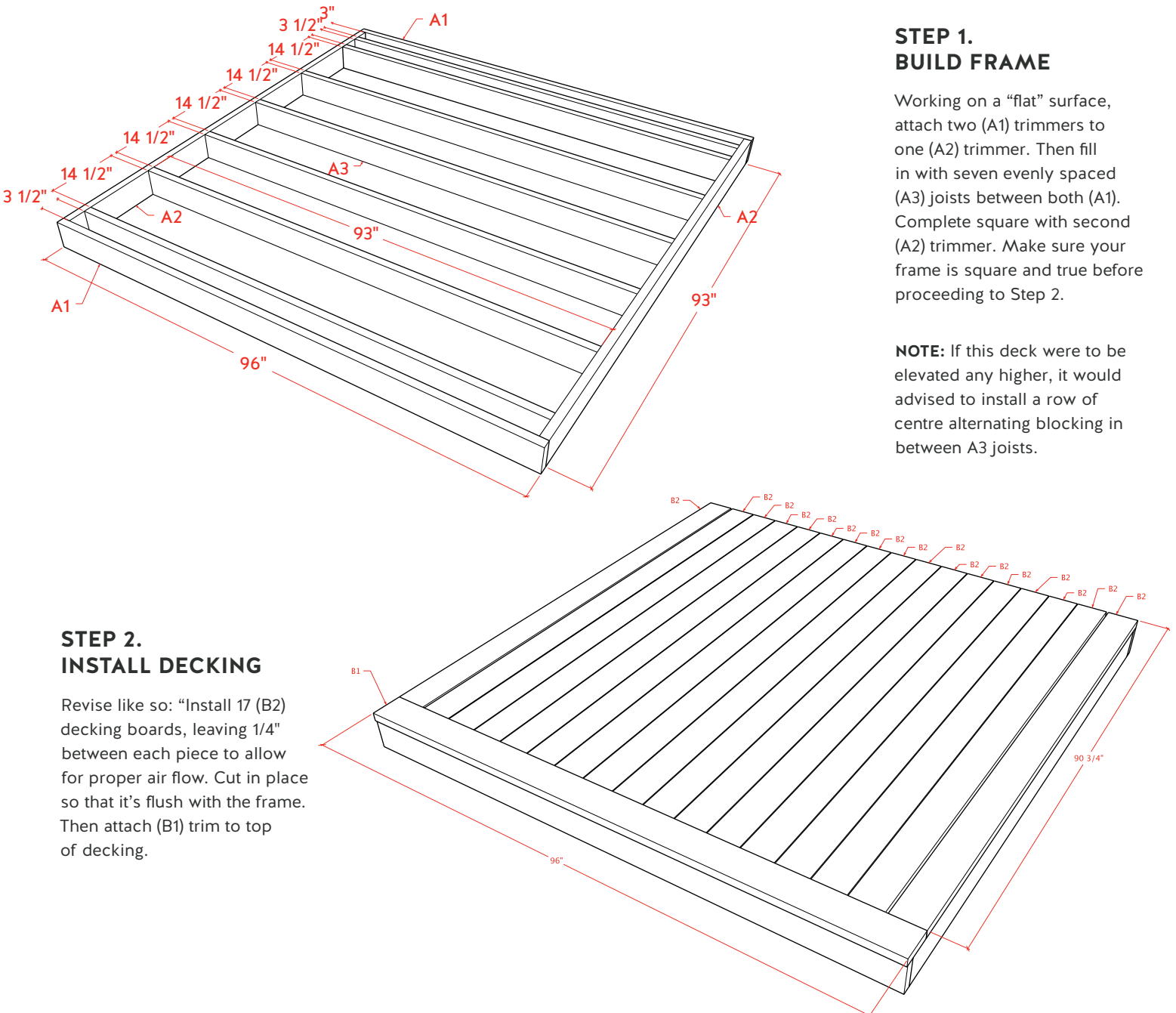
STEP 1. BUILD FRAME

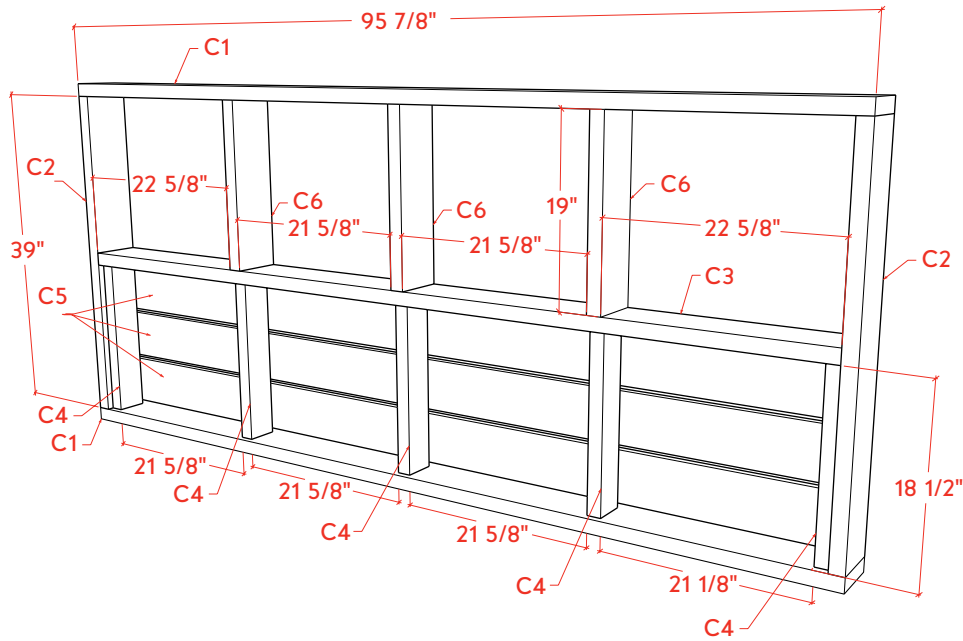
Working on a "flat" surface, attach two (A1) trimmers to one (A2) trimmer. Then fill in with seven evenly spaced (A3) joists between both (A1). Complete square with second (A2) trimmer. Make sure your frame is square and true before proceeding to Step 2.

NOTE: If this deck were to be elevated any higher, it would be advised to install a row of centre alternating blocking in between A3 joists.

STEP 2. INSTALL DECKING

Revise like so: "Install 17 (B2) decking boards, leaving 1/4" between each piece to allow for proper air flow. Cut in place so that it's flush with the frame. Then attach (B1) trim to top of decking.



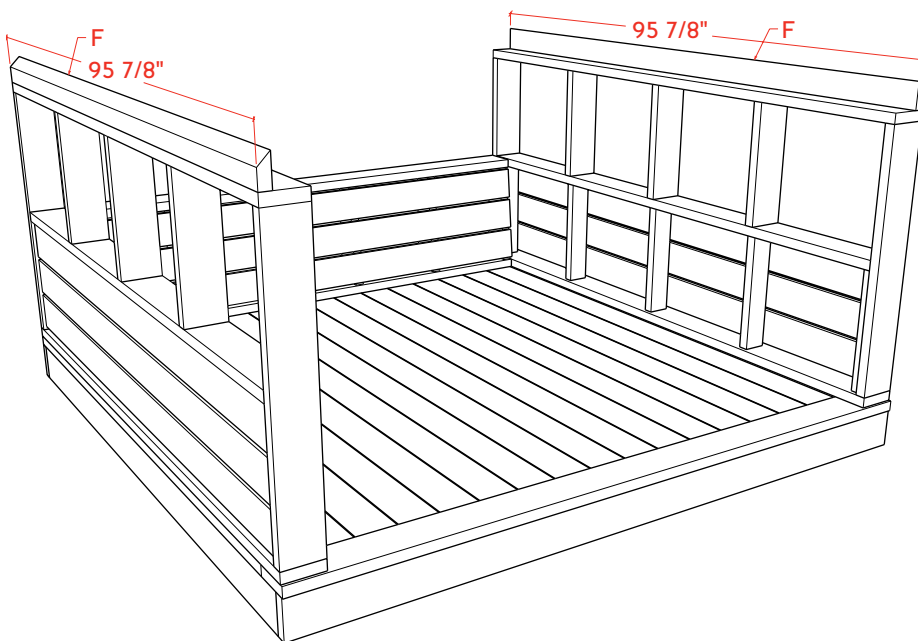
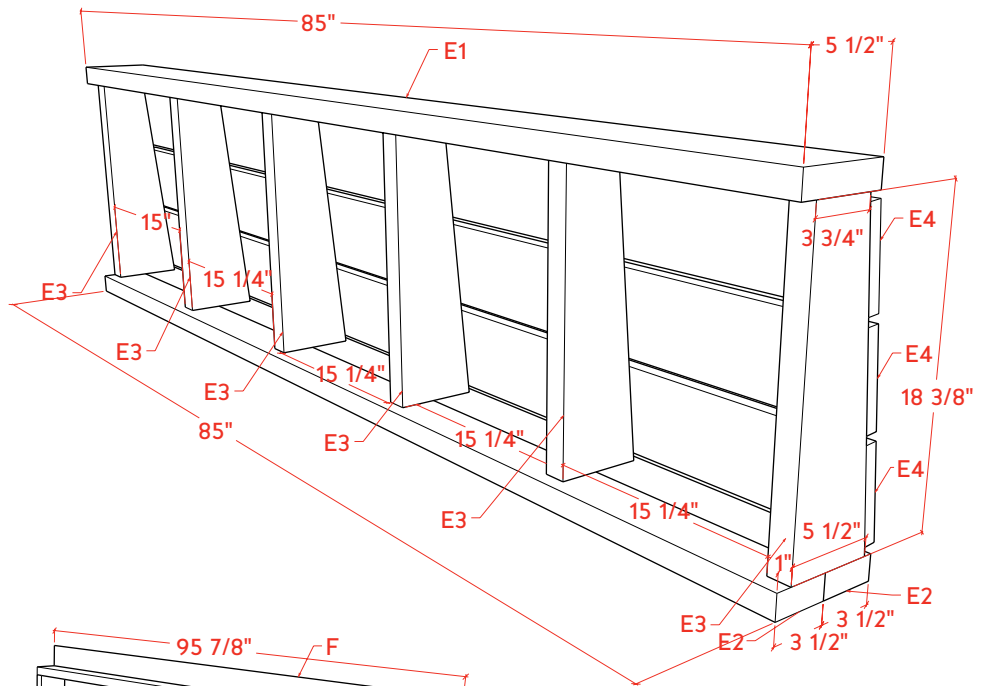


STEP 3. BUILD SIDE WALLS

For each wall, build a frame by attaching (C1) and (C2) frames. Install five evenly spaced, (C4) braces along (C1). Then top with (C3) brace and insert three (C6) top row braces. Complete rectangle with second (C1) frame.

STEP 4. BUILD HEADBOARD

Attach six evenly spaced vertical supports along (E2) frame and then top with (E1) frame. Complete by installing three (E4) wall slats on the back of the frame.

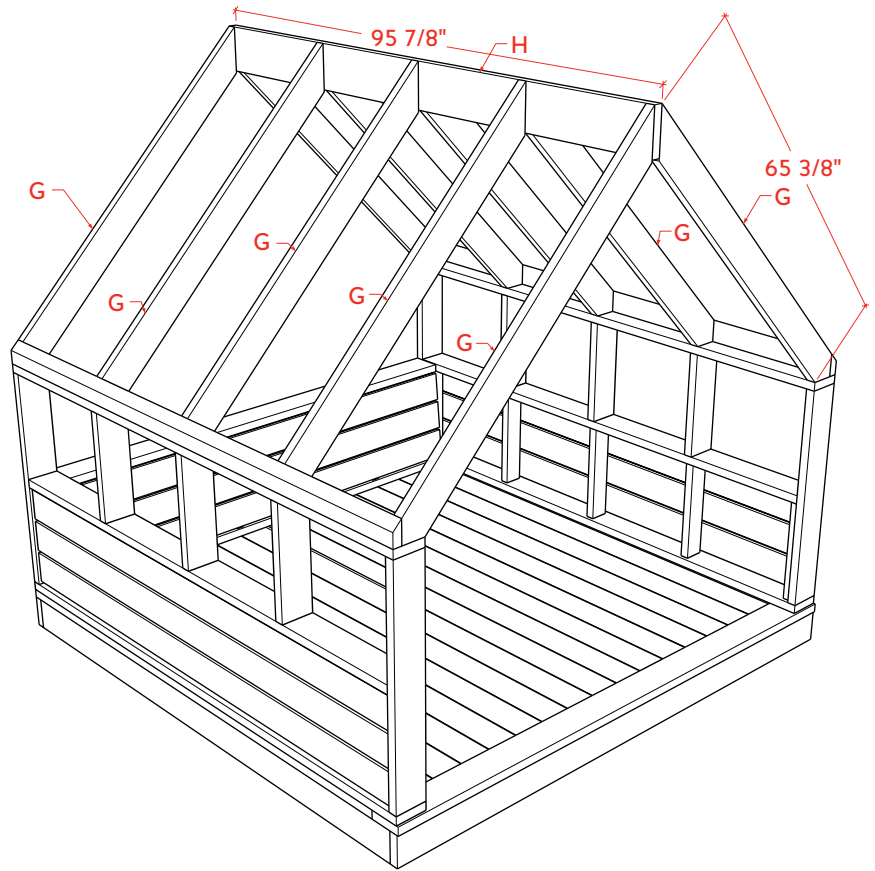


STEP 5. INSTALL ROOF & WALLS

Attach side walls to decking of day bed and then attach headboard to decking and sidewall. Complete side walls with (F1) supports.

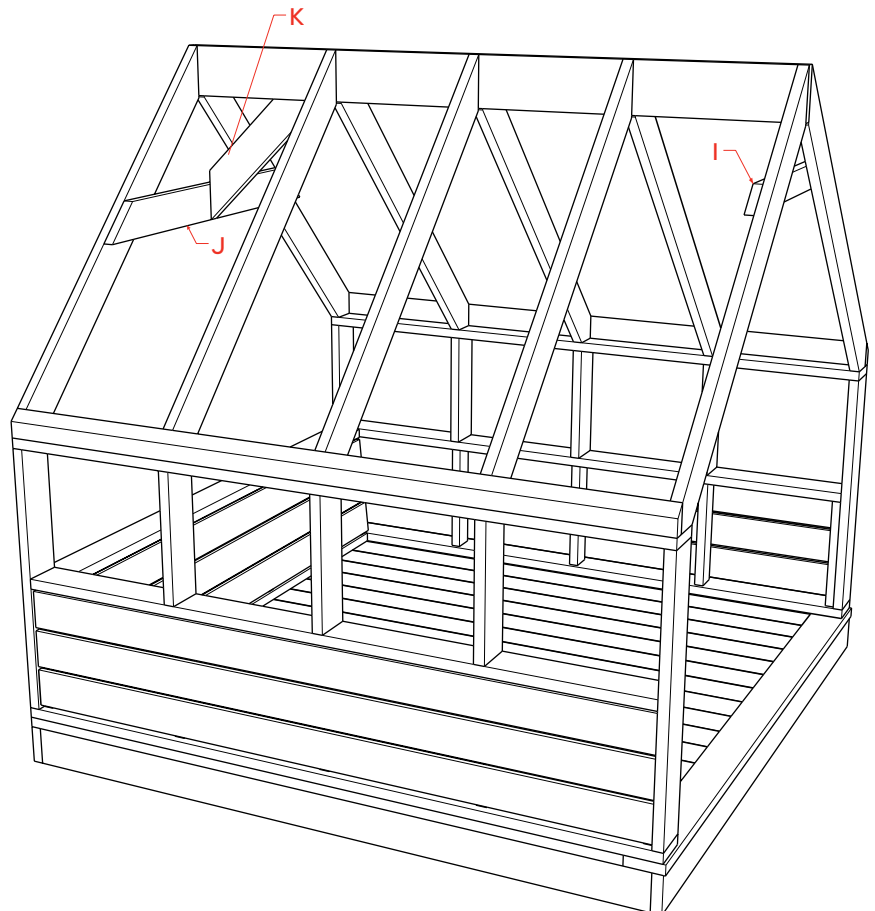
STEP 6. BUILD ROOF FRAMES

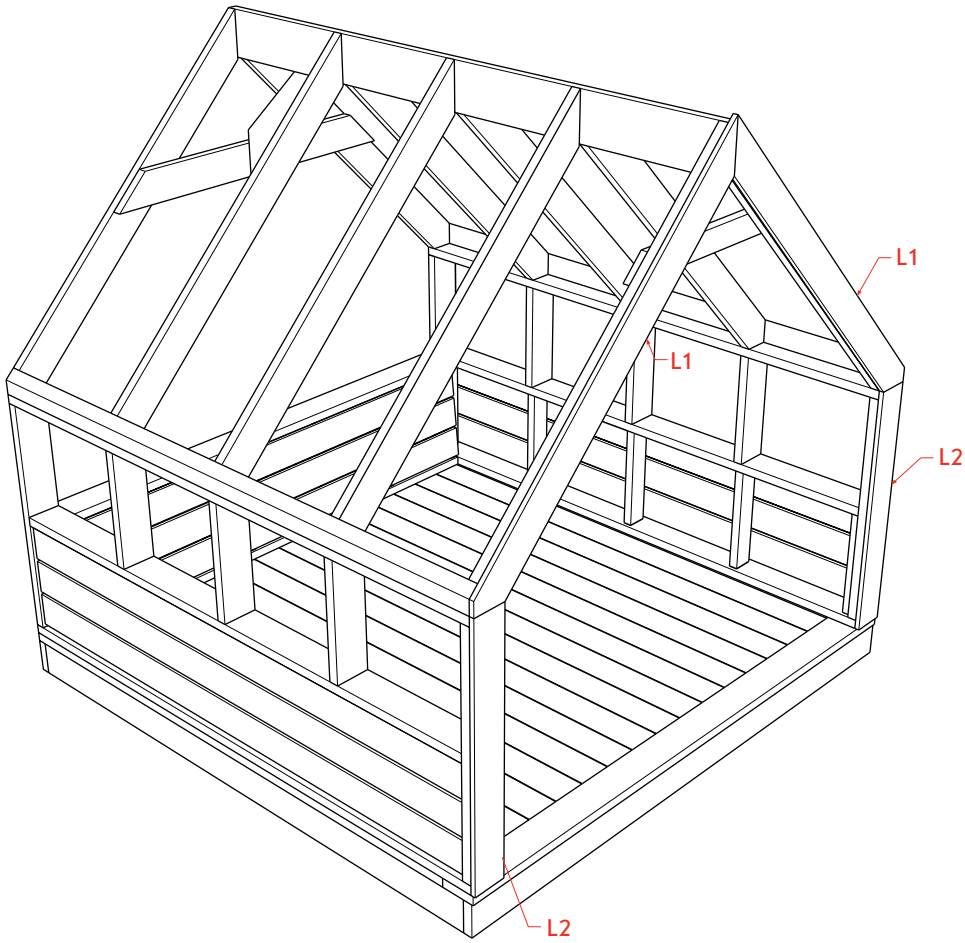
Working on a separate surface, attach five evenly spaced (G) rafters to either side of the (H) ridge. You will need two people to hoist the roof frame up. Screw (G) rafter tails to (F1) fascia board (part of rafter that sits on wall).



STEP 7. ADD COLLAR TIES

Attach (I) front collar between two (G) front rafters. Then attach (J) back collar between two back (G) rafters and complete by attaching (K) support between (J) collar ties and (H) ridge.





**STEP 8.
ADD COLLAR TIES**

Attach (L1) upper covers to front (G) rafters and complete with one (L2) lower cover to frontside of sidewall frames.